



Corporate Office:

1150 Simpson Way
Escondido
California
92029
760-466-1060
760-466-1057 fax
www.QuakeHOLDIndustrial.com

Los Angeles Office:

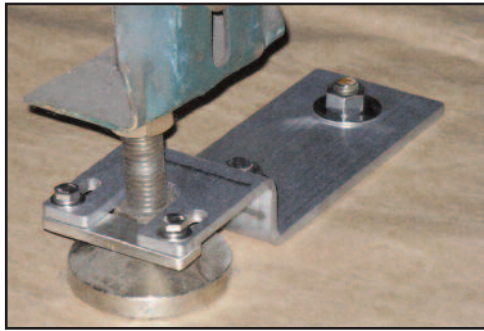
411 S. Vermont Avenue
Glendora
California
91741
626-852-8800
626-852-8801 fax

San Francisco Bay Area

Office:

22113 Queen Street
Castro Valley
California
94546
800-959-4053
510-363-8067 fax

Z-Bracket to Leveling Leg - Seismic Floor Restraint



Z-Bracket

Name: Z-Bracket to Leveling Leg

Part Number: Z.00.00.00.Z

Color: Stainless Steel

Purpose: Hold equipment in place during an earthquake

Kit Contains: (1) 1/8" thick stainless steel fork bracket with end stopper and (2) concrete anchors

Fastening Method: Fork goes around leveling leg and is attached to concrete with two 1/2" diameter concrete anchors