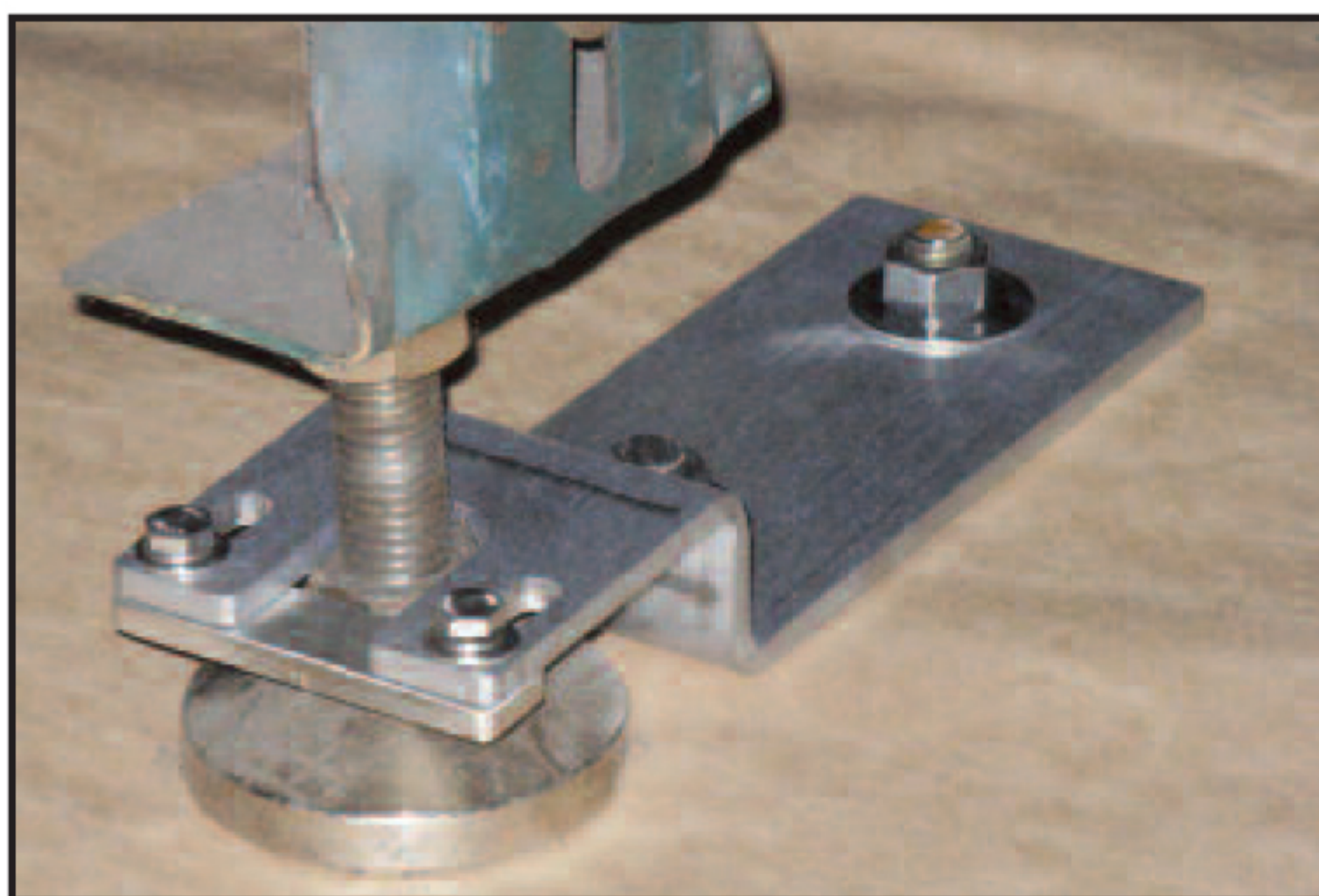




Z-Bracket to Leveling Leg - Seismic Floor Restraint



Z-Bracket

www.QuakeHOLDIndustrial.com

Corporate Office:

1399 Specialty Drive
Vista CA 92081
Phone: (800) 232-7836
Fax: (760) 295-0235

Los Angeles Office:

411 South Vermont Ave.
Glendora CA 91741
Phone: (805) 551-1446
Fax: (760) 295-0235

San Francisco Bay Area

Office:

26062 Eden Landing Rd.
Unit #2
Hayward CA 94546
Phone: (530) 333-7186
Fax: (760) 295-0235

Seattle Office:

420 South 96th Street
Seattle WA 98108
Phone: (800) 959-4053
Fax: (760) 295-0235

Name: Z-Bracket to Leveling Leg

Part Number: Z.00.00.00.Z

Color: Stainless Steel

Purpose: Hold equipment in place during an earthquake

Kit Contains: (1) 1/8" thick stainless steel fork bracket with end stopper and (2) concrete anchors

Fastening Method: Fork goes around leveling leg and is attached to concrete with two 1/2" diameter concrete anchors